

**WILTSHIRE
DANIELS**

CONNECTING PEOPLE TO
PROPERTY SINCE 1985



Preliminary details

186 SLOANE STREET KNIGHTSBRIDGE, LONDON, SW1

280 sq ft



CHAIRMAN'S OFFICE TO LET

WILTSHIRE DANIELS

CONNECTING PEOPLE TO
PROPERTY SINCE 1985



LOCATION

The property is located on the east side of Sloane Street, in the heart of Knightsbridge and close to Harrods being adjacent to the junction with Harriet Street towards the northern end of Sloane Street. There are a wide variety of high-class shops in the immediate area.

Knightsbridge underground station is a short walk away providing access to the Piccadilly line.

ACCOMMODATION

The available accommodation comprises a part first floor office with its own demised WC and a small kitchenette. The office is partitioned with a glass partition:

280 sq ft approx. 26 sq m approx.

AMENITIES

- * Superb self-contained office with own WC and kitchenette
- * Top quality furniture available (by negotiation)
- * Entry phone
- * 24 hour access
- * Lobby area
- * Superb well maintained building

LEASE

Assignment of a lease which expires in June 2020.

RENT

£17,000 per annum exclusive.

RATES

RV £11,500 so currently benefits from small business rates relief

SERVICE CHARGE

Capped at £2,500 per annum for term

LEGAL COSTS

Each party to be responsible for their own legal costs.

VIEWING

By appointment through sole agents, Wiltshire Daniels

Contact Daniel Isaacs on 020 7529 5559
email: dbi@wiltshiredaniels.com

WILTSHIRE DANIELS

CONNECTING PEOPLE TO
PROPERTY SINCE 1985



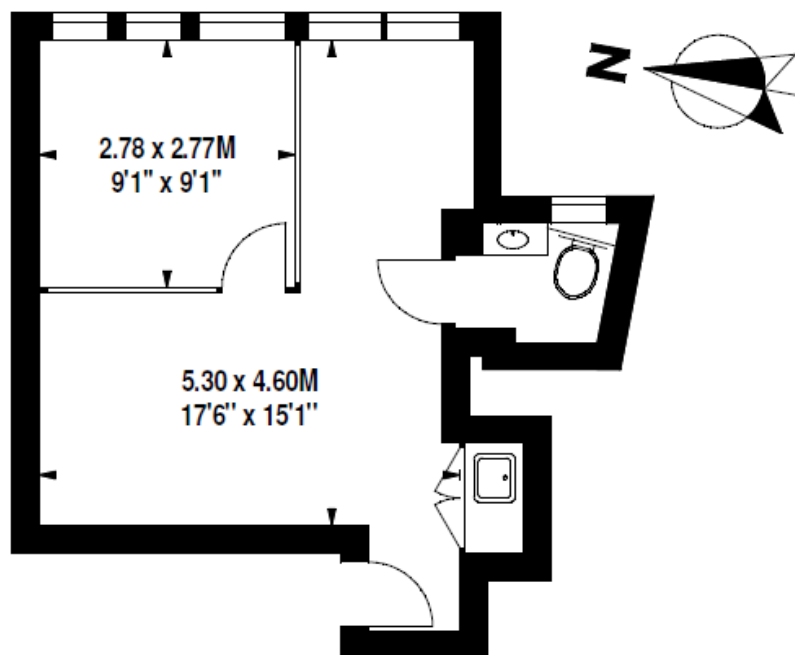
**WILTSHIRE
DANIELS**

CONNECTING PEOPLE TO
PROPERTY SINCE 1985



Sloane Street, SW1

Approximate Gross Internal Area 29 sq m / 312 sq ft



First Floor