

**WILTSHIRE
DANIELS**

CONNECTING PEOPLE TO
PROPERTY SINCE 1985



2 MILL STREET, MAYFAIR, LONDON W1



BOUTIQUE STYLE MAYFAIR OFFICES TO LET

305 sq ft, 530 sq ft & 650 sq ft suites

28.34 sq m, 49.24 sq m & 60.39 sq m

WILTSHIRE DANIELS

CONNECTING PEOPLE TO
PROPERTY SINCE 1985



LOCATION

The property is superbly located in a quiet street midway between New Bond Street and Regent Street being within walking distance of Oxford Circus, Green Park and Piccadilly Circus underground stations. There are a wide variety of shops and restaurants in the immediate vicinity.

ACCOMMODATION

The building has been fully refurbished to an exceptionally high standard throughout offering superb quality stylish office suites.

FLOOR	SUITE	SQ FT	SQ M	RENT	RATES *	SC	TOTAL PSF	TOTAL PER ANNUM
Ground	1	650	60.39	£72.50	£26.19	£13.00	£111.69	£72,598.50
Second	4	305	28.24	£72.50	£25.36	£13.00	£110.86	£33,809.25
Second	5	530	49.24	£72.50	£27.27	£13.00	£112.77	£59,768.10

* Rates payable for 2022/3 however interested parties must verify for themselves

AMENITIES

- * Attractive fully refurbished Mayfair period building
- * Boutique style contemporary finishes throughout
- * Plaster ceilings featuring industrial style exposed cable trays
- * Underfloor floor trunking in part
- * Network cabled ready for connection
- * Fibre internet installed
- * Passenger lift
- * Air conditioning to suites 1 & 5
- * Kitchenettes to suites 1 & 5
- * Suite 1 fully furnished
- * LED lighting
- * Bike storage facility

LEASE

New flexible lease/s by arrangement

LEGAL COSTS

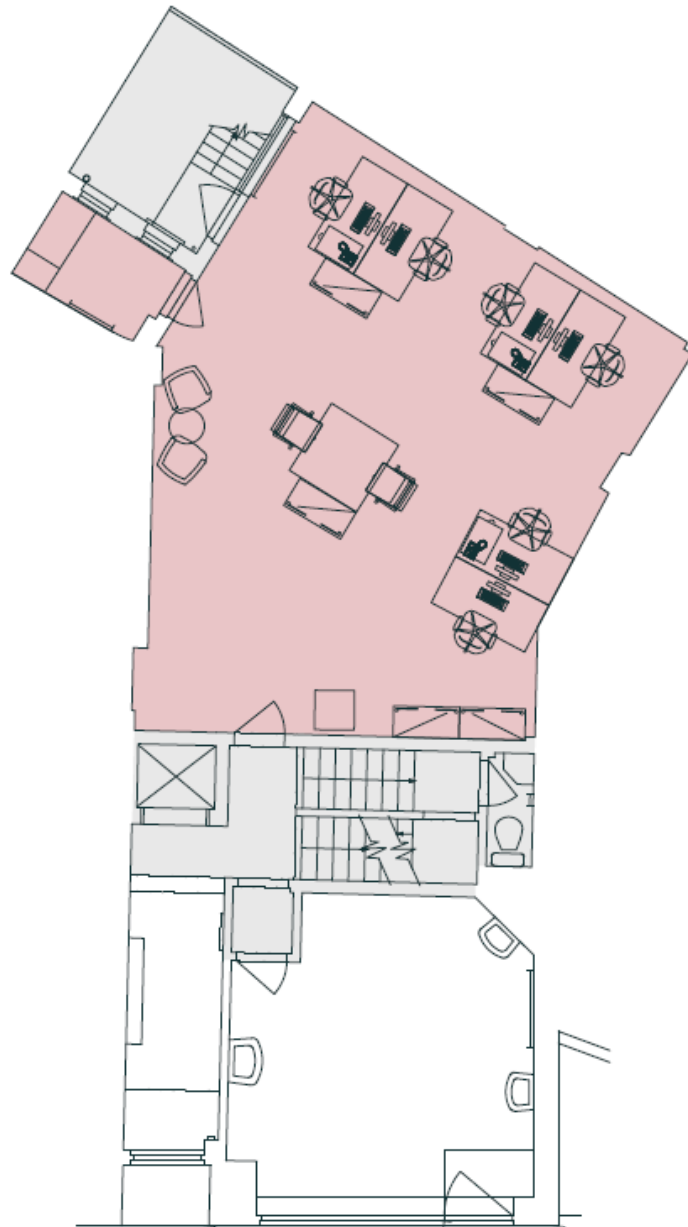
Each party to be responsible for their own legal costs.

VIEWING

Daniel Isaacs
Wiltshire Daniels
020 7529 5559
dbi@wiltshiredaniels.com

WILTSHIRE DANIELS

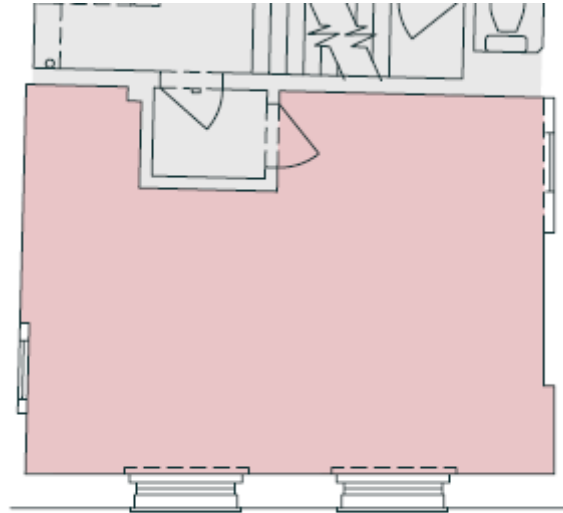
CONNECTING PEOPLE TO
PROPERTY SINCE 1985



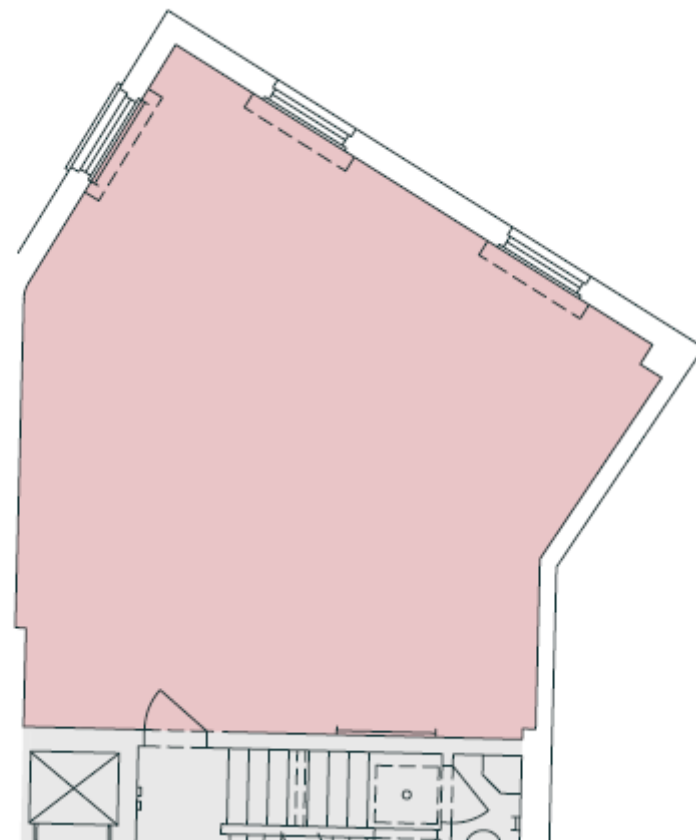
GROUND FLOOR SUITE 1

WILTSHIRE DANIELS

CONNECTING PEOPLE TO
PROPERTY SINCE 1985



SECOND FLOOR SUITE 4



SECOND FLOOR SUITE 5

WILTSHIRE DANIELS

CONNECTING PEOPLE TO PROPERTY SINCE 1985



WILTSHIRE DANIELS

CONNECTING PEOPLE TO
PROPERTY SINCE 1985

